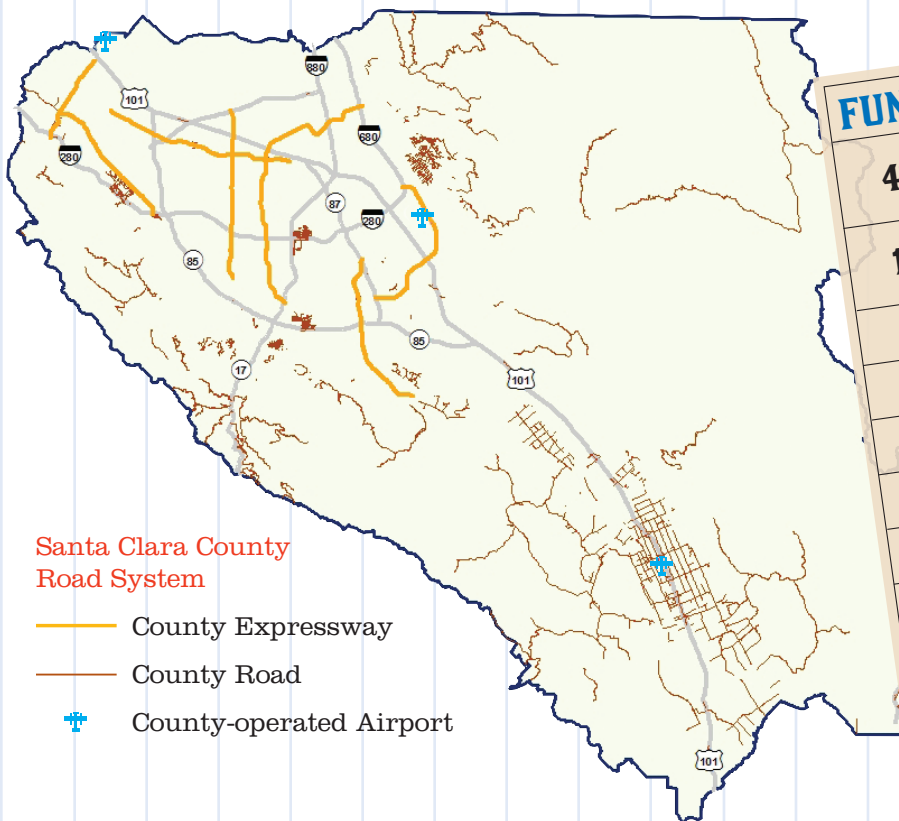


SANTA CLARA COUNTY CIRCULATION AND MOBILITY PLANNING PROJECT FACT SHEET

THE COUNTY OF SANTA CLARA is undertaking a Circulation and Mobility Planning Project. This Project will take a fresh look at the needs of the County road system in the context of traffic conditions and land uses for consistency with the California Complete Streets Act of 2008. The Project's objectives include:

▶ Prepare a new General Plan Circulation and Mobility Element to achieve compliance with the California Complete Streets Act of 2008 and to provide policy direction for the Roads Master Plan.

▶ Develop a Roads Master Plan for the nearly 600 miles of County-maintained roads, addressing development policies and standards for both public and private roads, determining future road expansion needs, and identifying Complete Streets improvements.



FUN FACTS

411	MILES OF RURAL AND MOUNTAIN ROADS
161	MILES OF URBAN UNINCORPORATED ROADS
62	MILES OF EXPRESSWAYS
39	MILES OF CARPOOL LANES
23	MILES OF SOUNDWALLS
168	BRIDGES
165	SIGNALIZED INTERSECTIONS
1,800	STREET LIGHTS
25,000	TRAFFIC SIGNS
3	MILLION ROAD TRIPS DAILY

A PROACTIVE AND EXTENSIVE COMMUNITY OUTREACH PROCESS will be used throughout this planning project to ensure public input into the Circulation and Mobility Planning Project and Roads Master Plan recommendations. The Project progress and direction will be monitored and guided by staff from the County Roads and Airports Department and the County Department of Planning and Development.

For more information or to provide comments, please contact us:

WEBSITE: <http://circulationplan.countyroads.org>
(Sign up for project updates!)

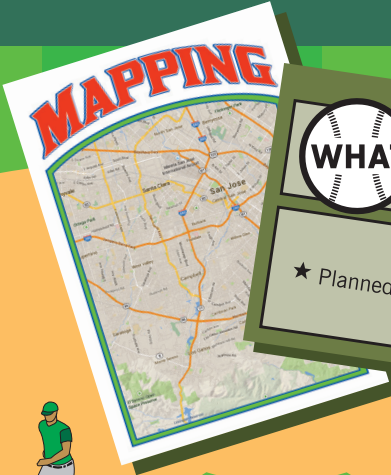
PHONE: 408.573.2417

EMAIL: [Circulation Plan@CountyRoads.org](mailto:CirculationPlan@CountyRoads.org)

MAIL: Circulation and Mobility Planning Project
Roads and Airports Department
County of Santa Clara
101 Skyport Drive
San Jose, CA 95110

SANTA CLARA COUNTY CIRCULATION AND MOBILITY PLANNING PROJECT TIMELINE

[HTTP://CIRCULATIONPLAN.COUNTYROADS.ORG](http://circulationplan.countyroads.org)



WHERE ARE WE GOING?
 April 2014-December 2015

- ★ General Plan Circulation and Mobility Element
- ★ Program Environmental Impact Report

WHAT SHOULD THE COUNTY ROAD SYSTEM LOOK LIKE?
 March-July 2014

- ★ Planned County Road System

WHO ARE THE ROAD USERS AND WHAT DO THEY NEED?
 November 2013-April 2014

- ★ Current and future traffic demand
- ★ Current road plans and policies
- ★ Complete Streets best practices

HOW WILL WE GET THERE?
 June 2015-March 2016

- ★ Roads Master Plan

LEGEND

- Stakeholders**
Large private roads communities, developers, agricultural interests, business groups, cities
- Neighborhood/Community Groups**
Urban and rural unincorporated community groups, e.g., San Martin, San Antonio Hills, Burbank, Cambrian, Alum Rock, Mount Hamilton
- Community Meetings**
For unincorporated rural areas without organized neighborhood/community associations; open to all members of the public

- Public Meetings**
County Roads Commission, Bicycle and Pedestrian Advisory Committee, Planning Commission and Board of Supervisors
- Public Hearings**
Planning Commission and Board of Supervisors
- Environmental Meetings**
Scoping and public comment